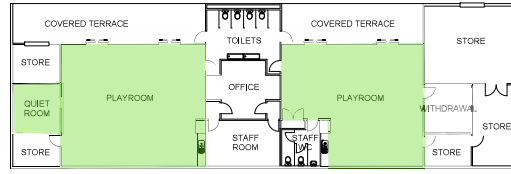


# IAQ Map Legend - Winter Operation

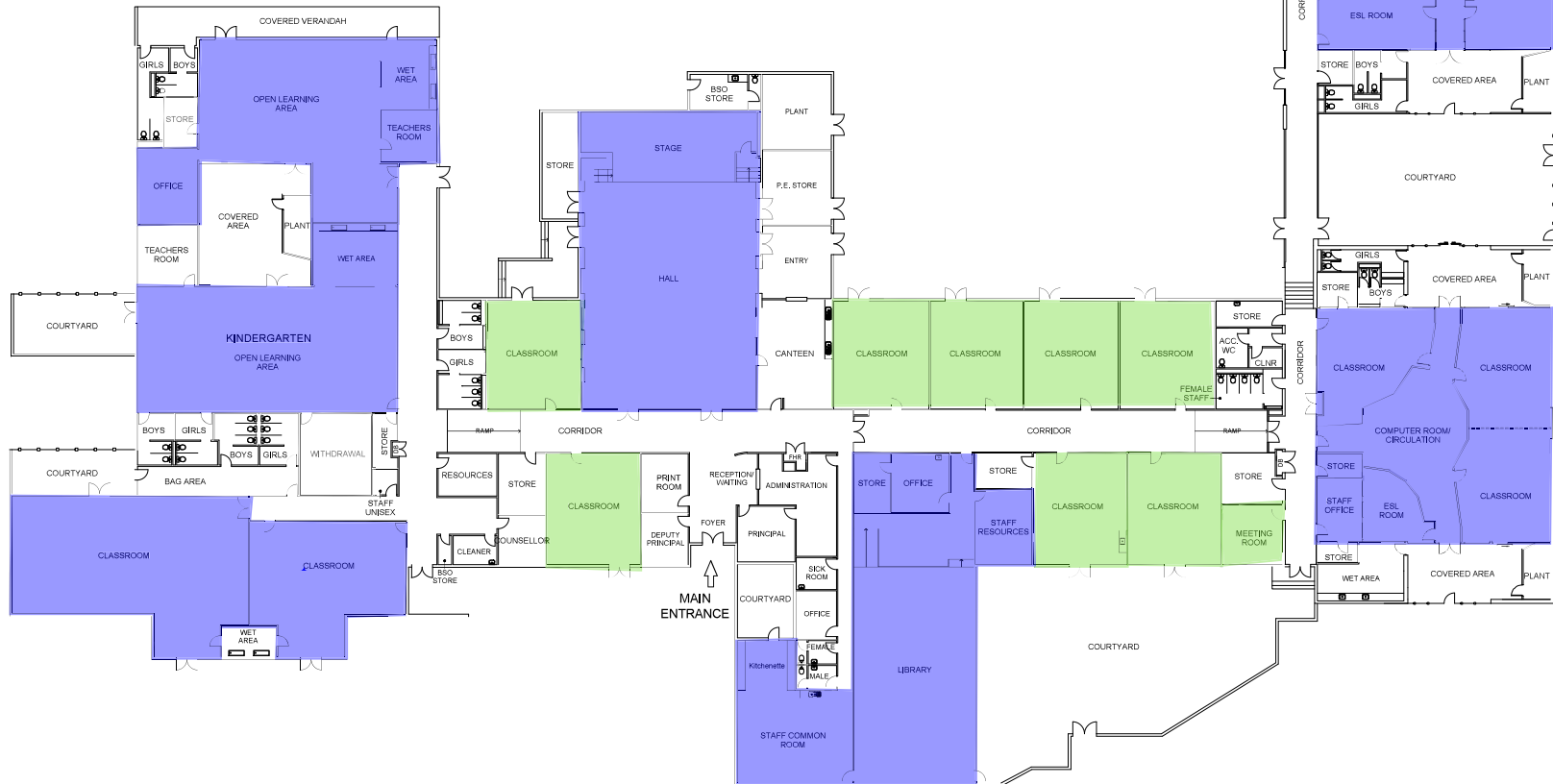
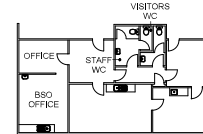
**Natural ventilation:** Operable windows and/or louvres should be used to manage fresh air, balancing thermal comfort and ventilation.

**Mechanical ventilation:** Fresh air is introduced by the heating, ventilation and air conditioning system when in operation. Windows can remain closed and no action is required by the school.

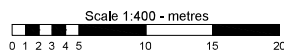
Note: White spaces are to be used in accordance with COVID-19 requirements and current health advice.



PRESCHOOL



ISSUE	AMENDMENT	DRAWN	VER'D	APP'D	DATE



SCALE  
1:400  
DATE  
JULY 2016  
DRAWING SHEET SIZE = A3



PROJECT  
KALEEN PRIMARY SCHOOL  
INFRASTRUCTURE & CAPITAL WORKS  
SCHOOL LAYOUT PLAN